

Installation
Operation
Maintenance
Troubleshooting
Version Dec/17



Congratulations!

All of us at Summit Dental Systems want you to know that your 1607 Daytona Cuspidor has been built with the finest materials available.

The assembly and testing was completed by technicians devoted to making SDS products perform to all prescribed specifications.

Our five year limited warranty is just one of the ways we express our confidence that you will be completely satisfied with your purchase.

We appreciate your support and look forward to meeting your future professional needs through our expanding product line.

Cesar Coral

President

Important Information

Technical Specifications

Factory Pre-set Air Regulator Pressure: 80 PSI
 Factory Pre-set Water Regulator Pressure: 40 PSI

Handpiece Pressure: 30-35 PSI (for most high-speed handpieces)
 40-45 PSI (for most low-speed handpieces)

Unpacking

Pay careful attention when unpacking the cuspidor and its accessories. Damage caused by mishandling the equipment during unpacking or installation is not covered under warranty.

New Owner

Please read, sign and submit the warranty registration form that is located at the end of this manual. Failure to return this form may void the warranty.

Serial Number

Record this serial number in a convenient location. You will be asked for this number when requesting service or warranty information. (see drawing on next page for location of label).

| | | |
|---|-------|------|
| SUMMIT DENTAL SYSTEMS FL, Louisiana, FL, USA | | |
| MODEL No: | _____ | |
| SERIAL No: | _____ | |
| PRODUCT: | _____ | |
| VOLTS | HERTZ | AMPS |

Warning

Medical Electrical Equipment needs special precautions regarding EMC and needs to be installed and put into service according to the EMC information provided in this manual.

Portable and mobile RF communications equipment can affect Medical Electrical Equipment.

Attention

CE-mark

Manufacturer and
Date of manufacture

Serial Number



Attention, consult
accompanying operation
instructions.



Company
Address
2005-06



European Authorized Representative



MT Promedt Consulting GmbH
Altenhofstrasse 80
D-66386 St. Ingbert, Germany
Phone: +49 (0)6894-581020
Fax: +49 (0)6894-581021

Questions?

Read this manual carefully. If you have any questions, please call Summit Dental Systems Technical Service at 1-800.275.3368 (USA) or (954) 730-3636 (Outside USA).



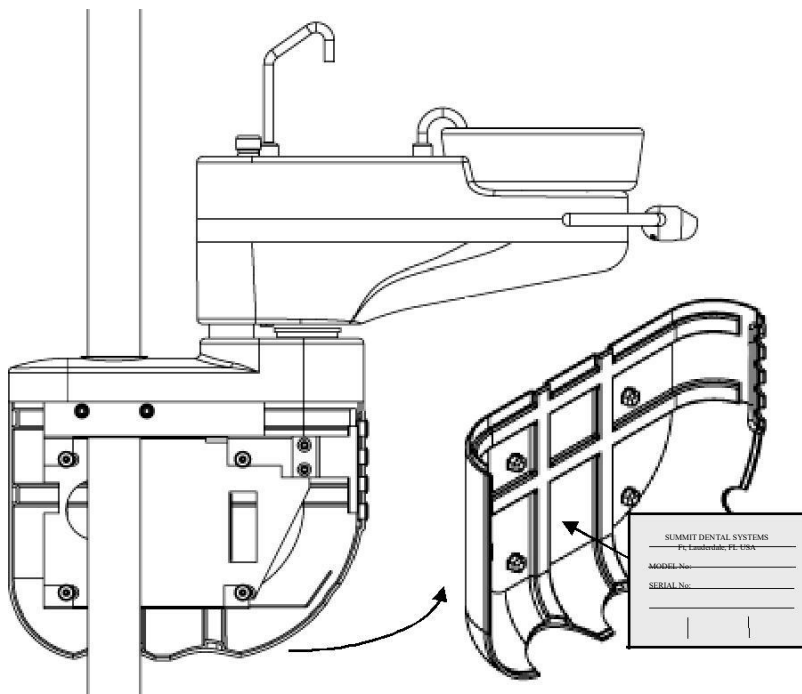
CAUTION

When adjusting the bowl rinse or cup fill timing valves, do not over tighten the screws. This may result in unnecessary damage to the tubing.



CAUTION

Do not attempt to over extend the breakaway assembly. Over extension to the breakaway assembly may cause unnecessary damage to the cuspidor.

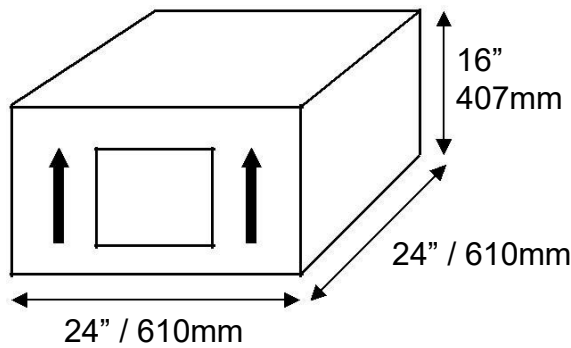


Product Label
Location

The product label can be located behind the post mounted utility box cover.

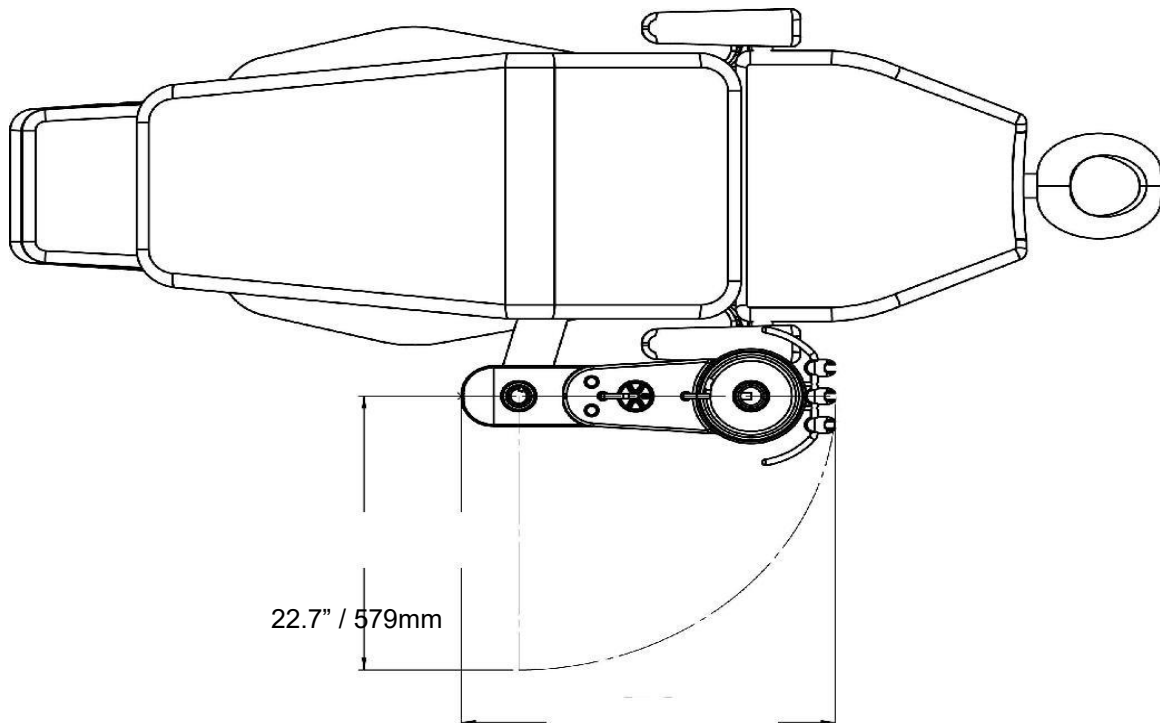
Weight & Dimensions

Shipping Information

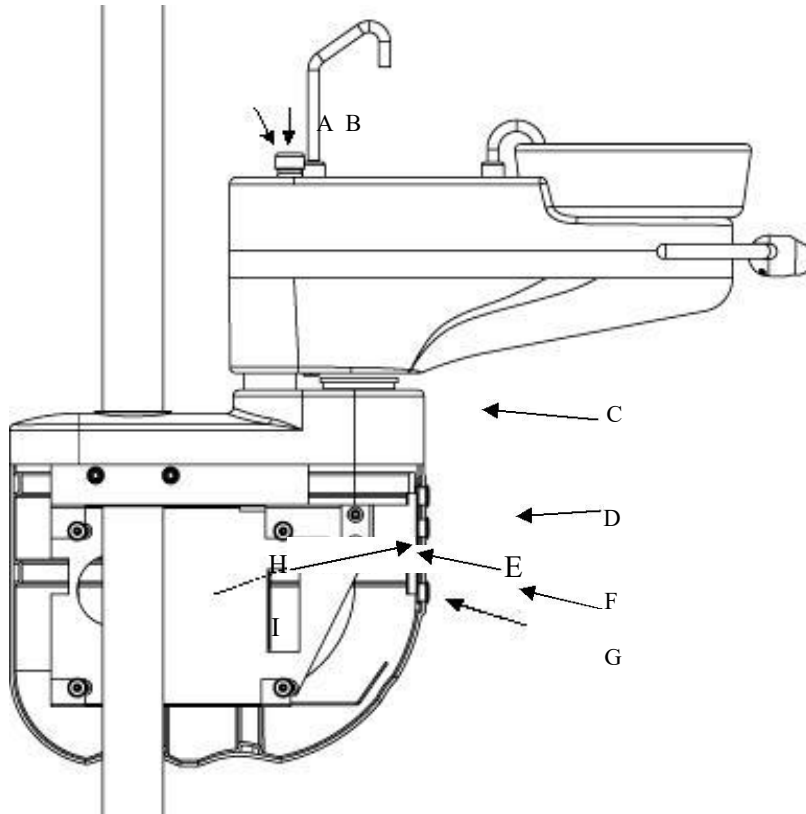


Shipping Weight:
24 lb / 10.91 kg

General Dimensions



Operator's Instructions



- | | |
|----------------------------|---|
| A. Manual Cup Fill | <input type="checkbox"/> Activates cup fill manually. |
| B. Timed Bowl Rinse | <input type="checkbox"/> Press and release bowl rinse button. |
| | <input type="checkbox"/> The Bowl Rinse will automatically turn off. |
| C. Solids Collector | <input type="checkbox"/> Remove cap to access collection screen for disposal (must rotate bowl) |
| D. Air Flow Control | <input type="checkbox"/> Optional |
| E. Air Quick Disconnect | <input type="checkbox"/> Optional |
| F. Water Flow Control | <input type="checkbox"/> Adjusts the water flow to accessory. |
| G. Water Quick Disconnect | <input type="checkbox"/> Water supply to accessories. |
| H. Cup Fill Flow Control | <input type="checkbox"/> Adjusts the water flow of the cup fill. (Remove cover to access) |
| I. Bowl Rinse Flow Control | <input type="checkbox"/> Adjusts the water flow of the bowl rinse. (Remove cover to access) |

Cleaning Your Cuspidor

Daily Maintenance

At the end of every day, flush the drain to remove debris that can collect in the flexible drain tubing. If the drain is not flushed regularly, debris can build up and clog the cuspidor drain tubing.

1. Remove bowl screen from the cuspidor bowl and clean.
2. Raise the chair to its highest position and activate the bowl rinse several times, long enough for the water to flow down the drain for approximately 60 seconds.



CAUTION

Do not empty the bowl screen into the cuspidor. This can clog the cuspidor drain.

3. Remove the solids collector screen and clean.



CAUTION

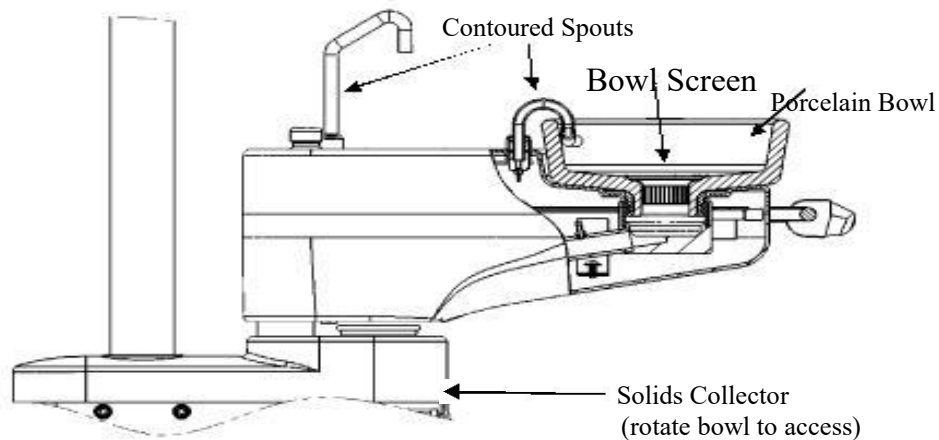
Do not empty the solids collector screen into the cuspidor. This can clog the cuspidor drain.

4. Your cuspidor is designed for quick and easy cleaning. The smooth surfaces, removable porcelain bowl and contoured spouts help facilitate more complete cleaning.

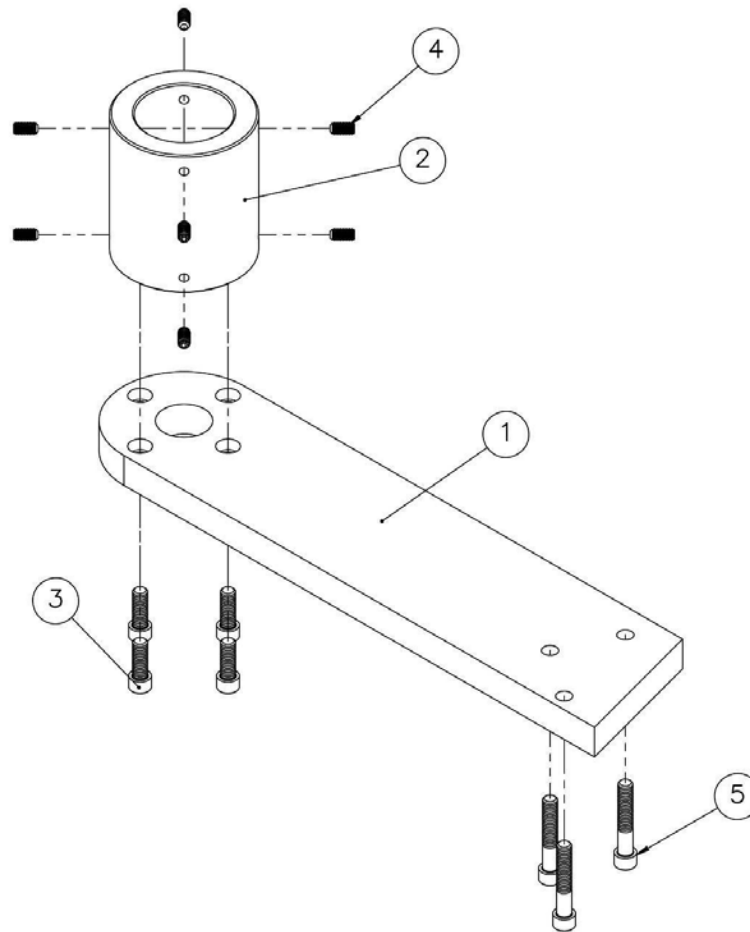


CAUTION

Do not remove the contoured cup fill or bowl rinse spouts. This will help prevent cleaning solutions from causing unnecessary damage to the cuspidor and contaminating the water flow to the cup.

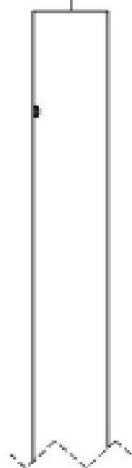
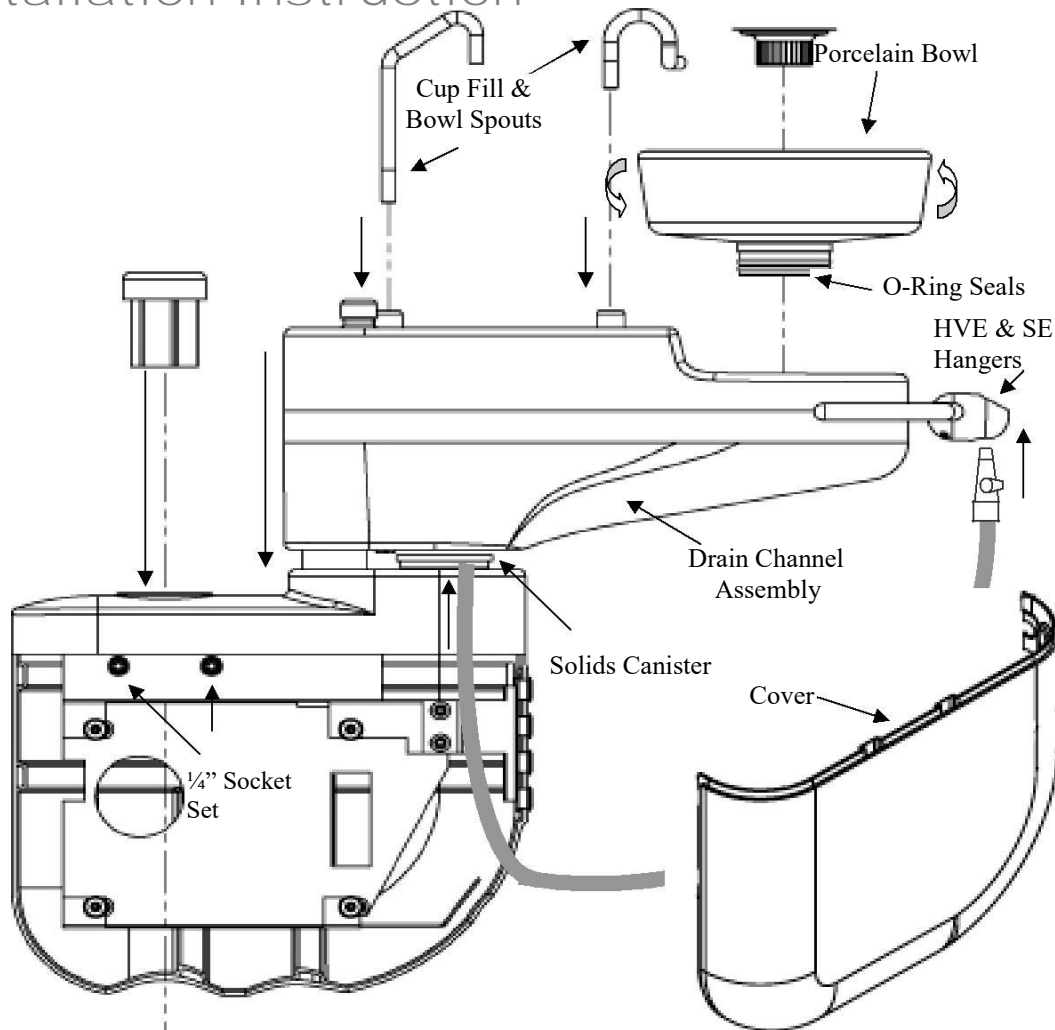


Post Leveling



1. Install the post with the bushing at the top; be certain that the post bottoms (item 1) in the post socket (item 2) and that the hole in the side of the post is facing toward the head of the chair. Look at the post socket and locate the eight leveling screws (item 4).
2. Place a 6 to 12 inch level in the upright post (a magnetic level works best). While holding the post as upright as possible, tighten the upper four leveling screws until they just contact the post on all four sides. Position the level so that it is in line with the front to back level screws.
3. Level the post front to back. Now move the level 90 degrees and repeat the above procedure with the remaining screws for leveling side to side. Re-check level in both directions, and then fully tighten all leveling screws.
4. To ensure that the unit is absolutely level, it will be necessary to level the base unit on the post once the post has been leveled.

Installation Instruction



1. Remove the splitter box cover and slide the Cuspidor down the post to desired height and tighten the (1) Socket Set Screw (access by raising the cover) with a 1/4" Allen Key.
2. Attach HVE & Saliva Ejector Hangers to control ring and tighten the (2) Socket Set Screws of each hanger with a 1/4" Allen Key.
3. Attach the porcelain bowl to the bowl socket by slowly pressing down in a left to right motion. This will allow the O-rings on the bowl spout to properly set in the bowl socket.
4. Insert the Cup Fill & Bowl Spouts in to their respected sockets, with the rubber gray seals underneath the trim caps and flush against the sockets, and tighten the trim caps.
5. Attach the HVE and Saliva Ejector tubing the corresponding sockets of the solids canister and place valves in hangers.

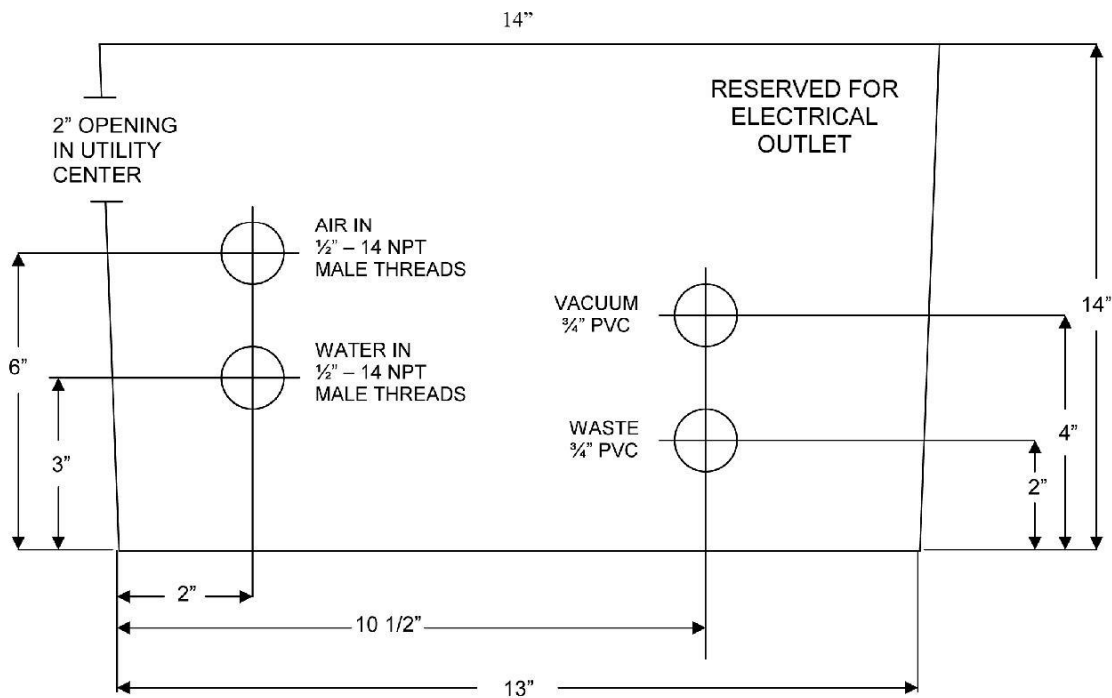
Test Bowl Rinse

1. Activate bowl rinse.
2. If bowl does not rinse long enough adjust 3-way bleed valve clockwise
3. If rinses to short turn 3-way bleed valve counter-clockwise

Test Cup Fill

1. Activate cup fill.
2. If bowl does not fill enough adjust 3-way bleed valve clockwise
3. If cup fills too much turn 3-way bleed valve counter-clockwise

Utility Center Plumbing Layout Not to Scale and not Included



NOTE: All pipes must be terminated 1 inch above floor.
 Position box so that 2" opening faces post side.

SDS Unit to Cuspidor Installation Instructions

Preparation

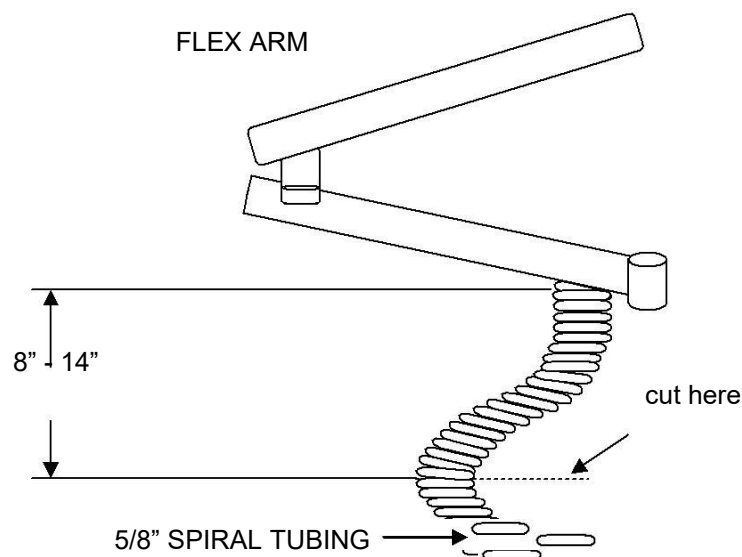
The cuspidor should be mounted in the desired location on the post.

The control flex arm should be mounted on the post at the desired height.

Shortening Arm Umbilical

To determine the length of the outer umbilical of the delivery unit, hold the umbilical up against the plastic grommet in the pass through hole located on the side of the cuspidor post mounted utility box. Allow enough length that the delivery unit arm can be moved freely without crimping the hose. Usually 8" to 14" from the point the umbilical exits the arm is sufficient (varies according to the height relationship of the delivery unit arm to the cuspidor post mounted utility box). Mark the appropriate length on the umbilical. Carefully cut only the outer umbilical at the desired length.

Insert the tubing and low voltage wire into the grommet and pass through hole of the cuspidor post mounted utility box until $\frac{1}{2}$ " of the outer umbilical is through to the inside of the pass through hole. Secure the umbilical on the inside of the pass through hole using the tie wrap provided.



Master On/Off Toggle Signal Connections

Connect the 1/8" yellow and 1/8" clear tubing from the unit to the plastic in line connectors located on the ends of the matching yellow and clear 1/8" tubing in the cuspidor umbilical.

Control Head Water And Air Lines

Connect the 1/4" blue tubing to the unregulated port on the water shut off valve (See diagram, page 25).

Connect the 1/8" blue tubing from the unit to the water regulator (See diagram, page 25).

Connect the 1/8" green tubing from the unit to the port, shown in the diagram, cut and install the 1/16" plastic "T" provided.

Locate the 1/8" gray tubing and connect to the 1/16" plastic "T" installed in the previous step.

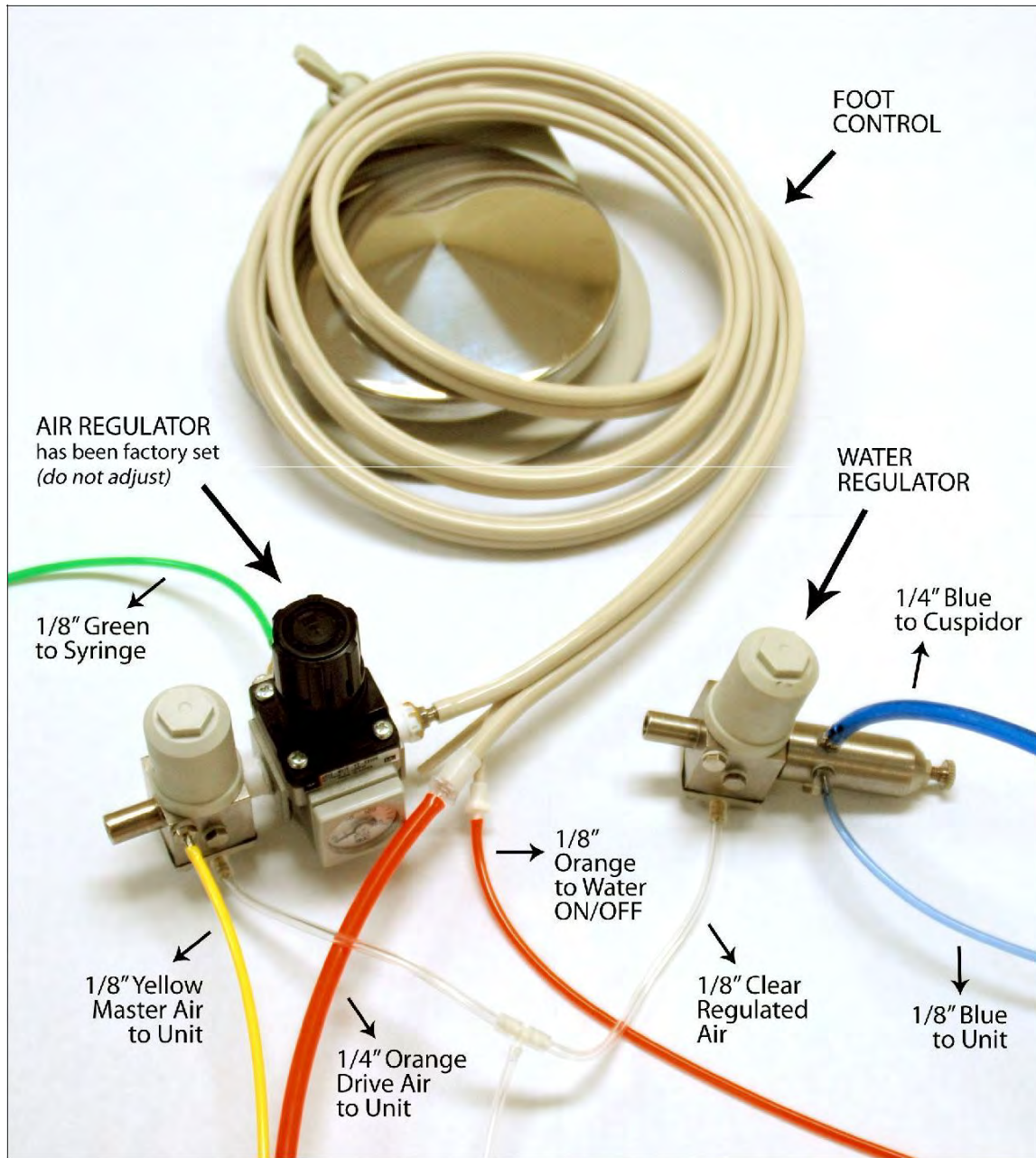
Foot Control Connections

Outlet

Disconnect the foot control from the orange 1/4" tubing of the cut away portion of the umbilical. Leave the plastic 1/4" barbed in-line connector on the foot control tubing. Reconnect the free end of this barb to the 1/4" orange tubing from the unit.

(Note): If the on/off water coolant toggle is located on the foot control, connect the 1/8" gray tubing from the foot control to the 1/8" orange tubing from the unit.

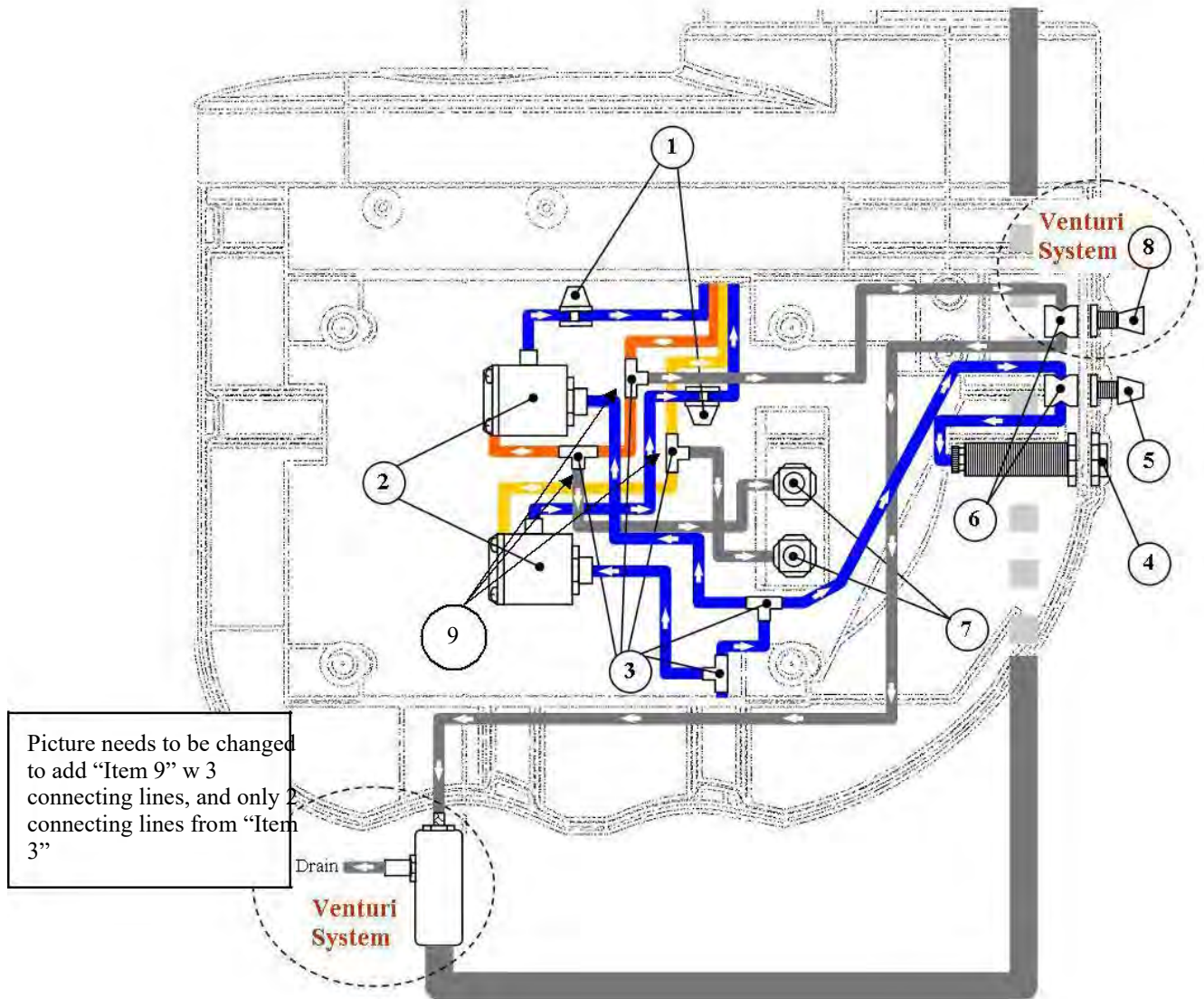
Utility Center Tubing Diagram



Water and Air Regulator Assembly

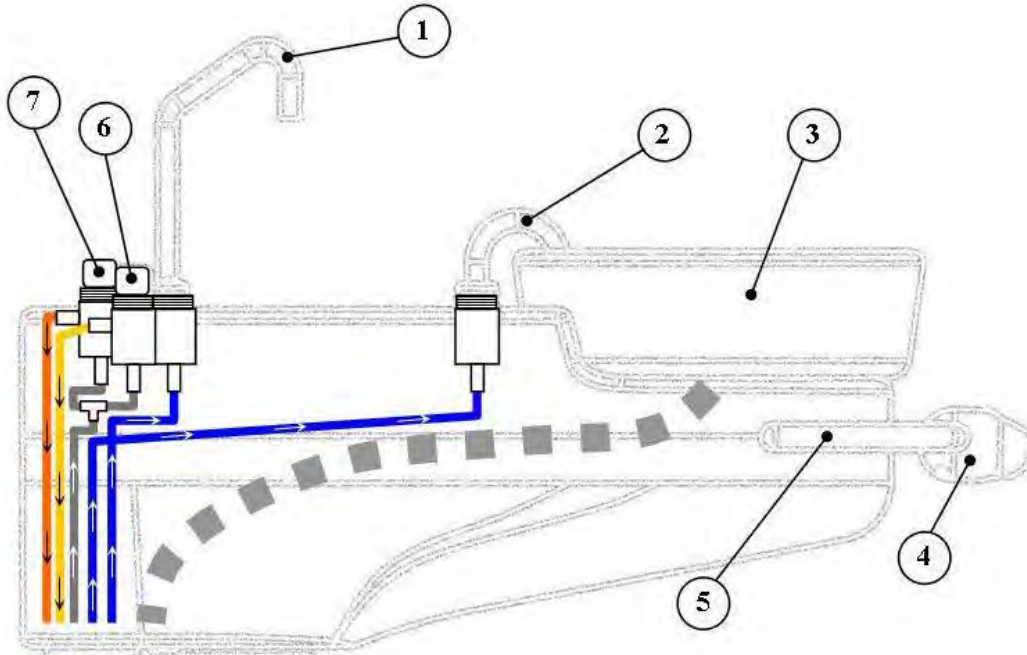
| Description | Part # | Description | Part # |
|-----------------------|------------|--------------------|------------|
| Wet & Dry Ft Ctrl | 5-020-0058 | 1/8" Blue Tubing | 5-070-0090 |
| Tubing, Sand 4H | 5-070-0025 | 1/8" Clear Tubing | 5-070-0027 |
| Water Regulator | 5-070-0103 | 1/4" Orange Tubing | 5-070-0047 |
| Filter Shut-Off Block | 5-070-0102 | 1/8" Green Tubing | 5-070-0083 |
| Air Regulator | 5-070-0111 | 1/8" Orange Tubing | 5-070-0123 |
| 1/8" Yellow Tubing | 5-070-0026 | 1/4" Blue Tubing | 5-070-0049 |

Flow Diagram & Parts - Box Assembly



| Item | Description | Part # |
|------|-----------------------------|------------|
| 1 | Pinch Valve | 5-030-0031 |
| 2 | Shut-off Valve | 5-020-0138 |
| 3 | 1/4" Plastic Tee | 5-030-0032 |
| 4 | Female QD | 5-020-0002 |
| 5 | Knob | 5-020-0041 |
| 6 | Flow Control | 5-070-0142 |
| 7 | Valve, Needle | 5-070-0054 |
| 8 | 2-Way Toggle Valve (ON/OFF) | 5-030-0111 |
| * | Air Venturi | 5-030-0121 |

Flow Diagram & Parts - Housing Assembly



| Item | Description | Part # |
|------|---|------------|
| 1 | Cup Fill Spout | 5-030-3003 |
| 2 | Bowl Rinse Spout | 5-030-3002 |
| 3 | Porcelain Bowl | 1-020-3001 |
| 4 | Egg, Syringe Holder | 5-020-0280 |
| 5 | Bar, Egg Holder | 5-020-3001 |
| 6 | 2-Way Push Button Valve (yellow tubing) | 5-030-0054 |
| * | 2-Way Push Button Valve (orange tubing) | 5-030-0054 |
| 7 | Bowl Rinse Push Button (external) | 5-030-3000 |
| * | Cup Fill Push Button (external) | 5-030-3001 |

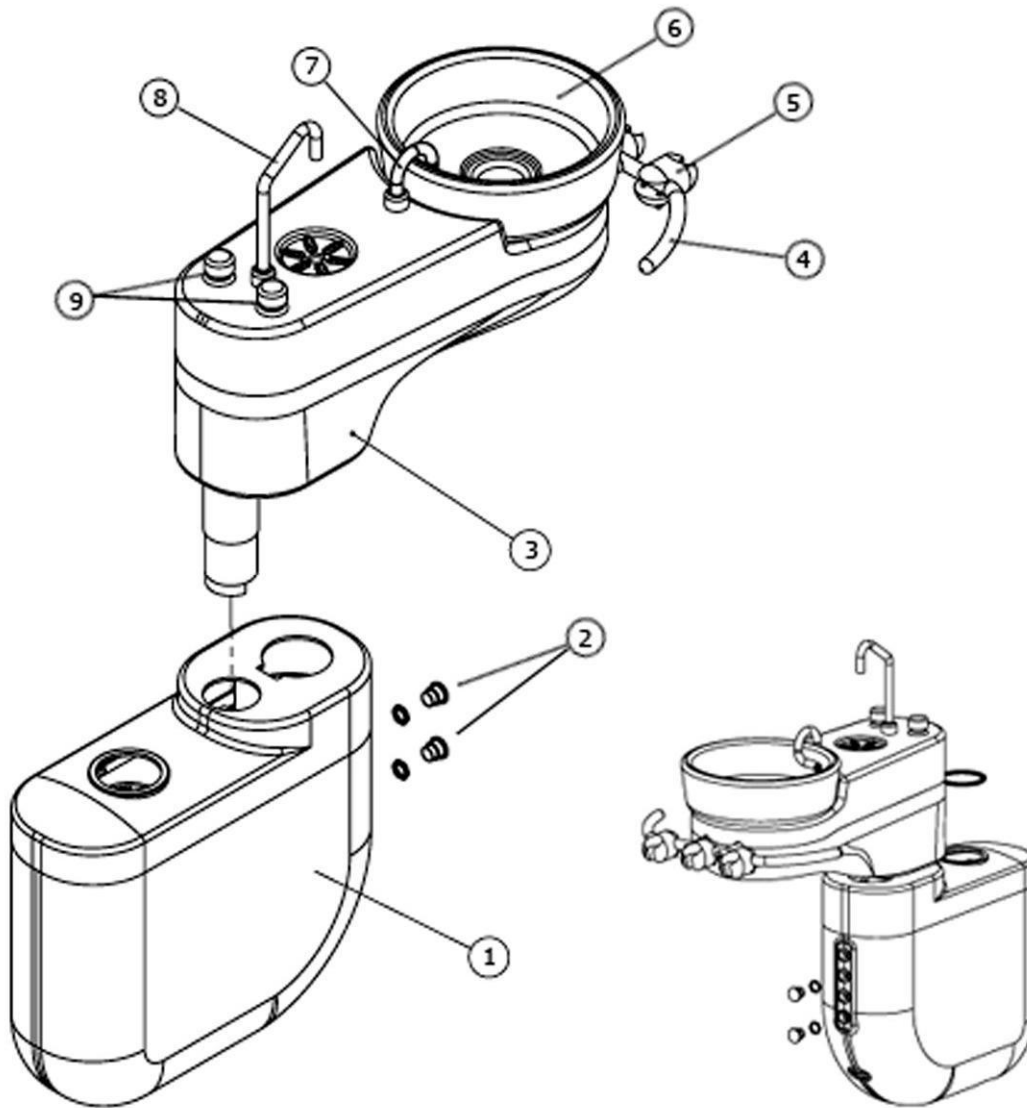
Troubleshooting Guide

| SYMPTOM | PROBABLE CAUSE |
|---|---|
| 1. Water does not drain. | A. Check drain for clogs or blockage. |
| 2. Cup Fill and/or Bowl Rinse too slow. | A. Adjust flow control valve. B. Check for blockage. C. Kinked or pinched tubing. D. Check water pressure (40 PSI). E. Check filter in water regulator. |
| 3. Cup Fill and/or Bowl Rinse too fast. | A. Adjust flow control valve. B. Check water pressure (40 PSI). |
| 4. No water flow. | A. Kinked or pinched tubing. B. Check for blockage. C. Check for filter in water regulator. |
| 5. Little to no suction. | A. Check vacuum pump. B. Check for blockage. |

PARTS LIST

Cuspidor Assembly
Post Mount Box Assembly
Drain Channel Assembly

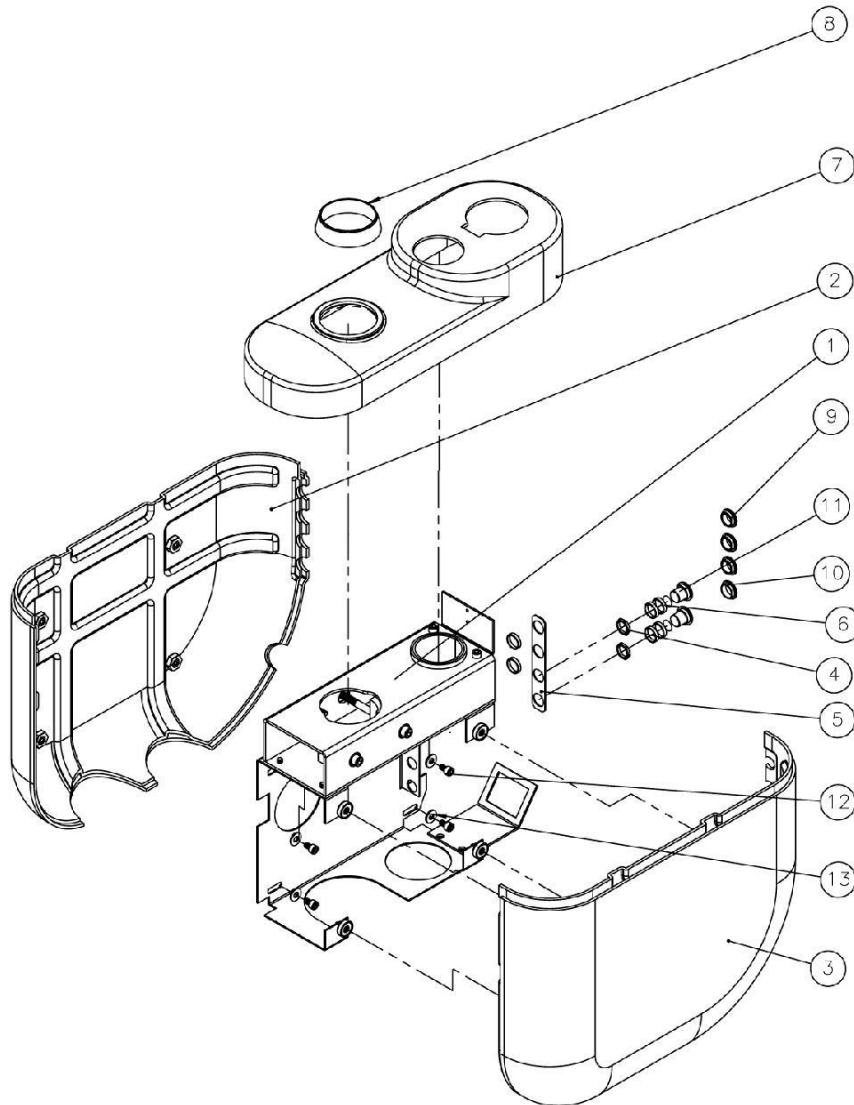
2-030-5000
2-030-4000



| Item | Description | Part # | Item | Description | Part # |
|------|-----------------------------|------------|------|------------------|------------|
| 1 | Post Mounted Utility Center | 2-030-5000 | 6 | Porcelain Bowl | 1-020-3001 |
| 2 | Utility Plug | 5-030-3005 | 7 | Bowl Rinse Spout | 5-030-3002 |
| 3 | Drain Channel Assy | 2-030-4000 | 8 | Cup Fill Spout | 5-030-3003 |
| 4 | Bar, Egg Holder | 5-020-3001 | 9 | Bowl Rinse PB | 5-030-3000 |
| 5 | Egg, Syringe Holder | 5-020-0280 | * | Cup Fill PB | 5-030-3001 |

Post Mount Box Assembly

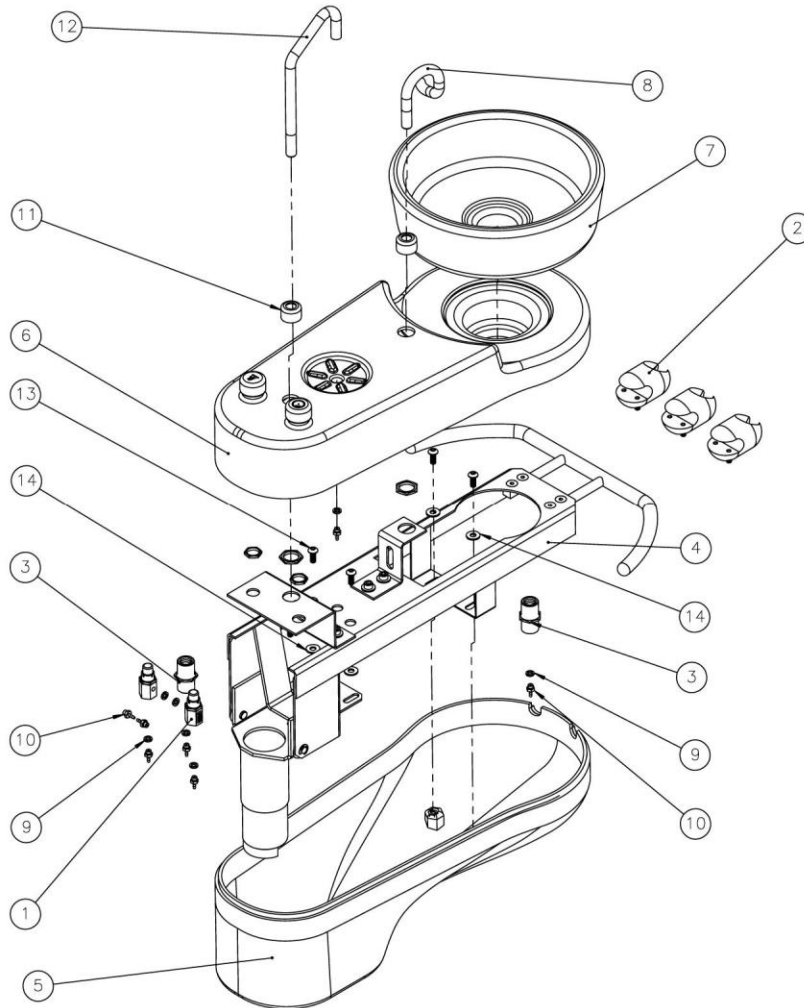
2-030-5000



| Item | Description | Part # | Item | Description | Part # |
|------|------------------|------------|------|--------------------|------------|
| 1 | Chassis | 2-030-0028 | 8 | Beauty Ring | 2-030-0032 |
| 2 | Right Side Cover | 2-020-3037 | 9 | Valve Cap | 2-030-0033 |
| 3 | Left Side Cover | 2-020-3036 | 10 | QD Cap | 2-030-0034 |
| 4 | Nut | 2-030-0029 | 11 | Utility Plug | 5-030-3005 |
| 5 | Valve Bracket | 2-030-0030 | 12 | Screw 10-24 x 5/16 | 4-010-0050 |
| 6 | Nylon Washer | 2-030-0031 | 13 | Washer | 4-020-0022 |
| 7 | Top Side Cover | 2-020-3038 | | | |

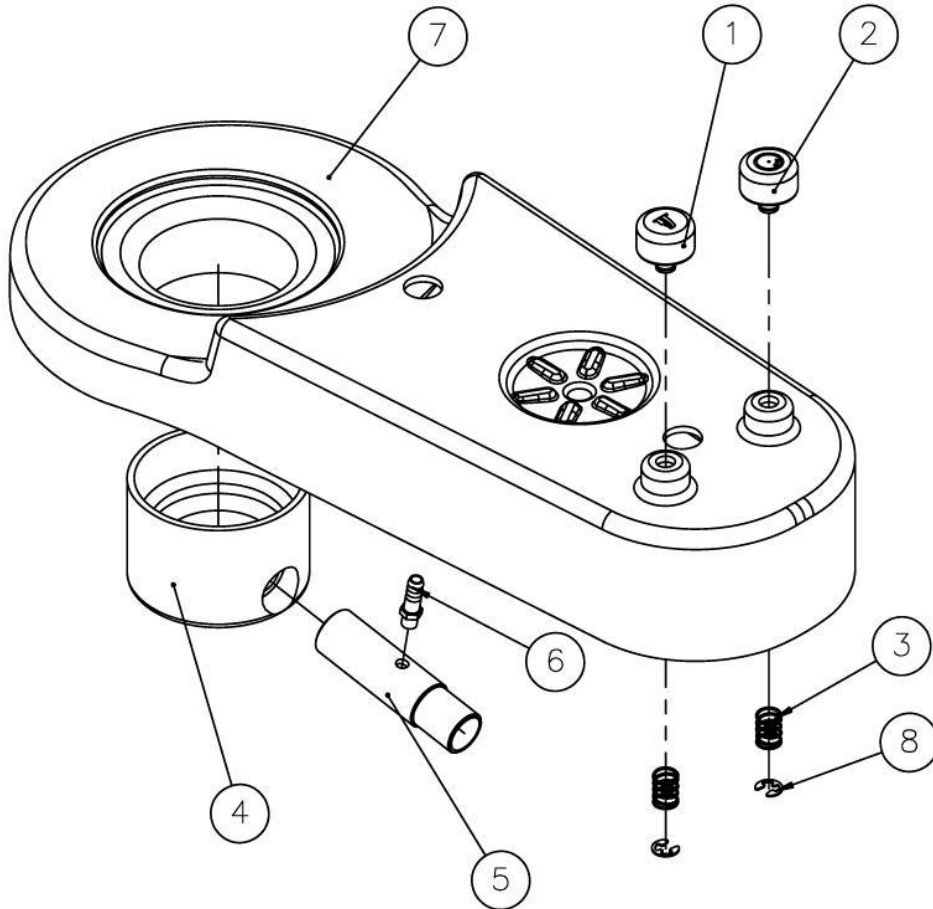
Drain Channel Assembly

2-030-4000



| Item | Description | Part # | Item | Description | Part # |
|------|----------------|------------|------|------------------|------------|
| 1 | 2-Way Valve | 5-030-0054 | 8 | Bowl Rinse Spout | 5-030-3002 |
| 2 | Egg | 5-020-0280 | 9 | Nylon Washer #10 | 4-070-0048 |
| 3 | Connector 5/8" | 5-030-0005 | 10 | Barb 1/4" | 4-070-0052 |
| 4 | Chassis | 2-030-0024 | 11 | Beauty Ring | 2-030-0025 |
| 5 | Housing | 2-020-3005 | 12 | Cup Fill Spout | 5-030-3003 |
| 6 | Top Cover | 2-030-0027 | 13 | Screw 10-24x1/2 | 4-070-0010 |
| 7 | Porcelain Bowl | 1-020-3001 | 14 | Zinc Washer #10 | 4-020-0022 |

Buttons and Bowl Socket Assembly



| Item | Description | Part # | Item | Description | Part # |
|------|-------------------|------------|------|-------------|------------|
| 1 | Bowl Rinse Button | 5-030-3000 | 5 | Pipe | 2-030-0023 |
| 2 | Cup Fill Button | 5-030-3001 | 6 | Nipple | 5-030-0004 |
| 3 | Spring | 2-030-0021 | 7 | Cover | 2-030-0027 |
| 4 | Bowl Socket | 2-030-0022 | 8 | E-Clip | 4-010-1008 |

WARRANTY

Summit Dental Systems (SDS) warrants its products against defects in materials or workmanship from the date of shipment to the Buyer as follows:

Summit Dental Systems (SDS) Equipment:

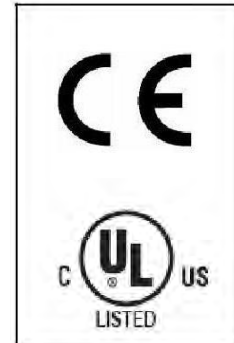
Chairs, Delivery Units, Cuspidors, Lights
 Control Block Diaphragm (part of Delivery Unit)
 All Upholstery, Stools, all Plastic Covers, and Cabinets

Warranty Period:

5 Years
 Lifetime
 1 Year

Summit Dental Systems' sole obligation under the warranty is to provide parts for repair, or at its option a replacement product (excluding all labor and shipping fees). "In any action, BUYER'S remedies are limited to warranty described above. BUYER shall not be permitted to claim lost profits, reliance, special, incidental, or consequential damages in any proceedings." The warranty does not cover damage from improper installation or maintenance, accident or misuse. The warranty does not cover damage resulting from the use of cleaning disinfecting or sterilization chemicals and processes. Failure to follow instructions provided in Summit Dental Systems' Operation and Installation Manuals (Owner's Guides) may void the warranty. In the event Warranty service must be performed to correct any defect, only an authorized Summit Dental System dealer may perform any and all warranty repairs. Any repairs by unauthorized dealers, technicians, or repairmen may void the warranty.

- In the case of a defective warranty item, a copy of the replacement invoice, model and serial number of the product under which it was replaced, and a description of symptoms of the defect must be returned with the part within 30 days of the replacement invoice date to Summit Dental Systems, 1280 SW 27th Ave Pompano Beach, FL 33069, USA, in order to receive credit. Any and all expenses for freight, labor to perform warranty service, and purchase of spare parts are the responsibility of the buyer. Any fraudulent claims made may void the warranty. Any additional warranty that may be provided by an authorized Summit Dental Systems dealer is the sole responsibility of said dealer.



- SDS reserves the right to make changes or improvements on any products without being required to modify existing equipment in a like manner.

Please complete and retain for your records the following Information:

In case of warranty part replacement/repair or when ordering a part, please call your authorized Summit Dental Systems dealer and have the following information available:

| | |
|----------------------|-----------------------|
| Owners' Name: | Phone #: |
| Model #: | SDS Serial #: |
| Dealer: | Phone: |
| | Purchase Date: |



1280 SW 27th Ave - Pompano Beach - FL 33069

Toll Free: (800) 275-3368

www.summitdental.com