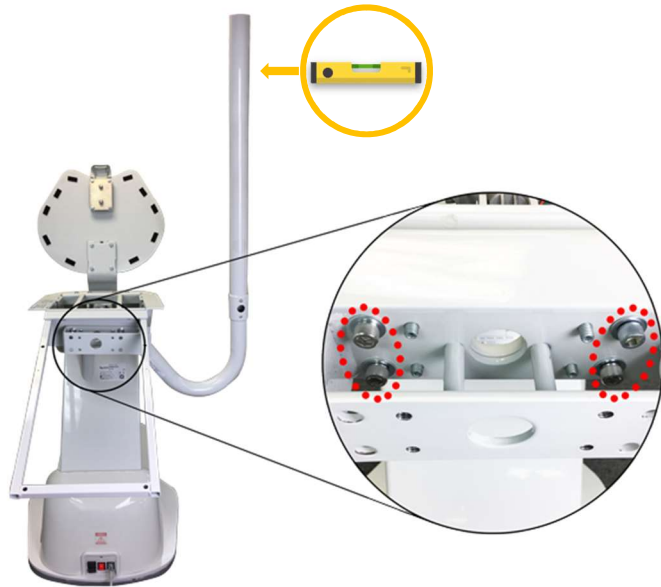


# 1335 EL LIGHT POST MOUNTED QUICK INSTALLATION GUIDE

1

Using a 5/16" Allen wrench attach and level post using 4 mounting screws.

**NOTE:** Level post before tightening.



2

Pull wiring harness while inserting FlexArm into rigid arm to avoid pinching.



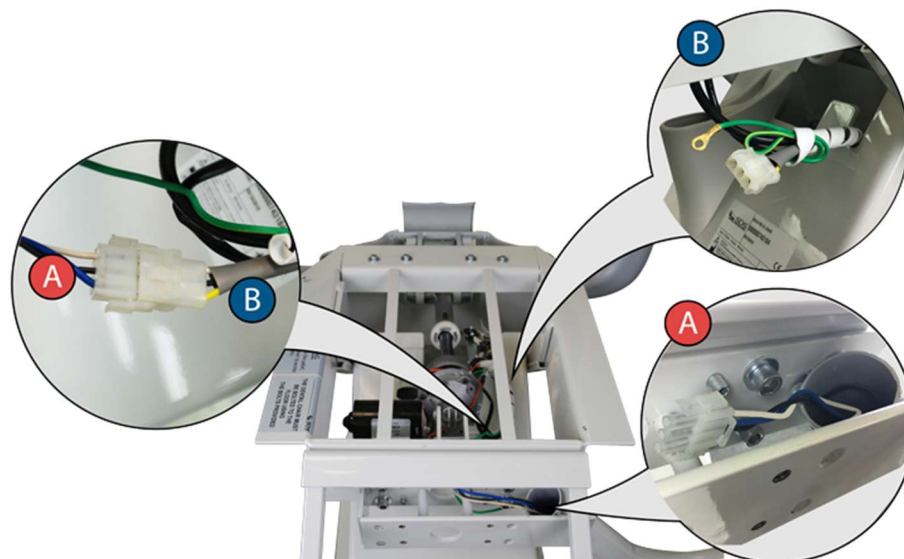
3

Use the supplied draw string to pull the wiring harness through the post.



4

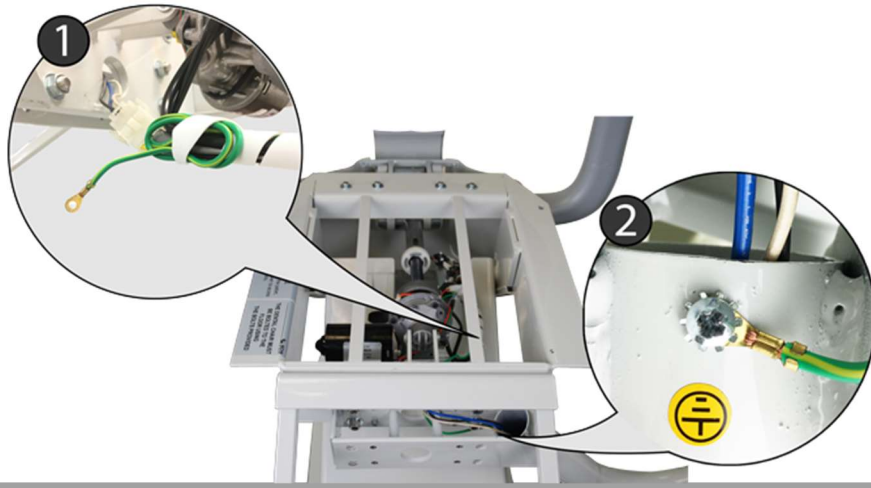
Connect male Molex connector (A) from light to female Molex connector (B) from chair.



# 1335 LIGHT POST MOUNTED QUICK INSTALLATION GUIDE

5

Install ground wire from chair to light post as shown.



6

ACTIVATION: Make sure chair is powered and turned "ON".

- Press and release button to turn light "ON".
- Press and release button to turn light "OFF".



7

Toggle switch to change light intensity.

